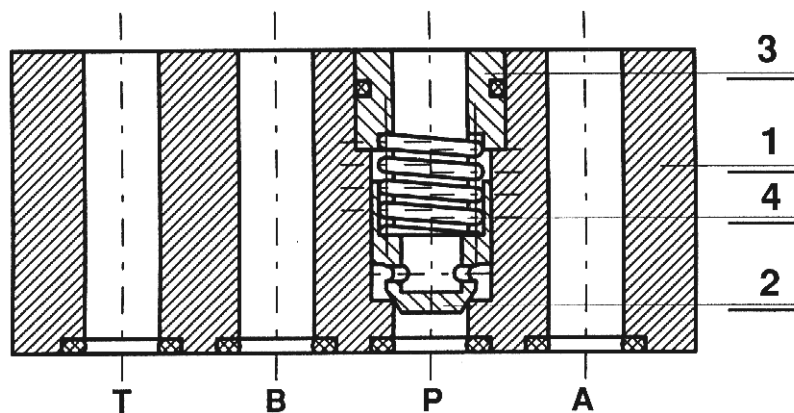
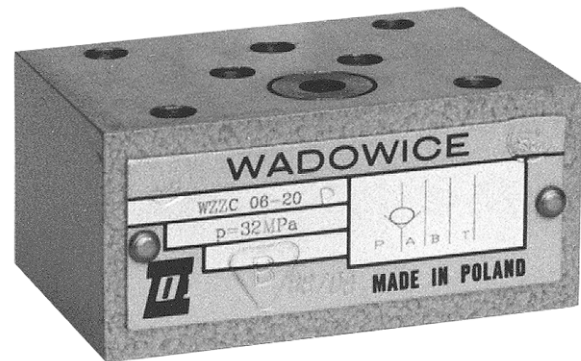


Check valves of sandwich plate design are intended for mating with control valves. They allow free flow of fluid in one direction and self-acting closure in the opposite direction. Valves can be mounted in any position as an intermediate element between a subplate and a control valve.



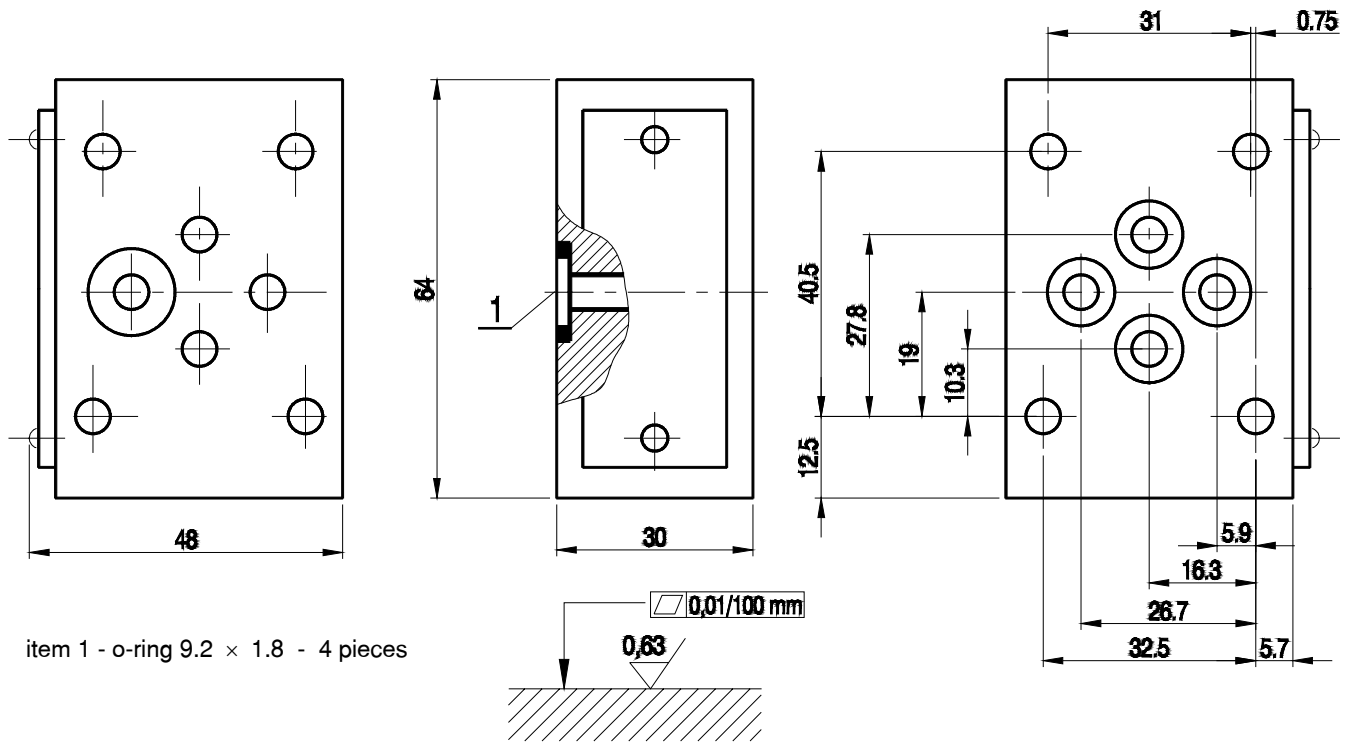
## DESCRIPTION OF OPERATION

The sleeve 3 with the seat for the spring 4 is fitted in the housing 1. The spring pushes the poppet 2 to the edge of port P in the housing 1. When pressure difference in port P exceeds the cracking pressure determined by the spring, the poppet will move allowing free flow in line P, A, B, T or A and B.

## TECHNICAL DATA

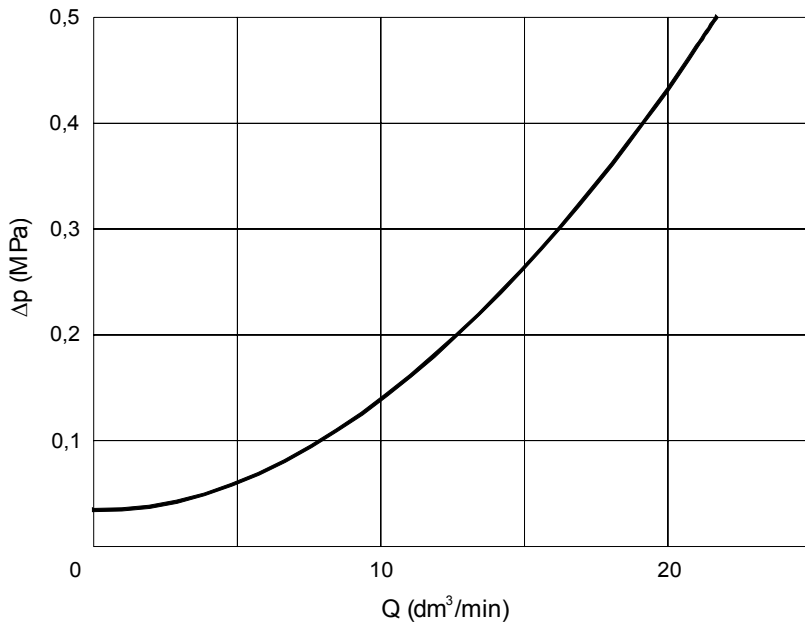
Hydraulic fluid	Mineral oil or phosphate ester
Nominal fluid viscosity	37 mm <sup>2</sup> /s at the temperature of 328 K
Viscosity range	2.8 to 380 mm <sup>2</sup> /s
Optimum working temperature ( fluid in a tank )	313 - 328 K
Fluid temperature range	243 - 343 K
Required fluid filtration	16 μm
Recommended fluid filtration	10 μm
Maximum working pressure	32 MPa
Cracking pressure	0.05 MPa
Weight	0.6 kg

# OVERALL DIMENSIONS

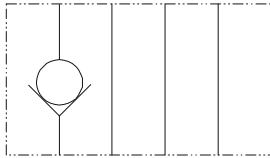


Admissible surface roughness and flatness deviation for a subplate face.

# PERFORMANCE CURVES, measured at $\nu = 41 \text{ mm}^2/\text{s}$ and $T = 323 \text{ K}$

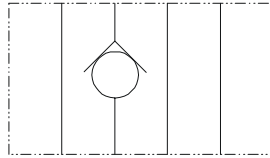


## SCHEMES



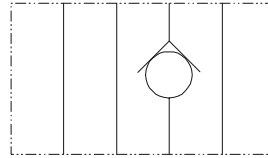
P A B T

WZZC 06-22 P



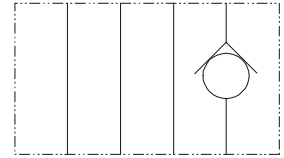
P A B T

WZZC 06-22 A



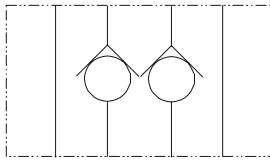
P A B T

WZZC 06-22 B



P A B T

WZZC 06-22 T

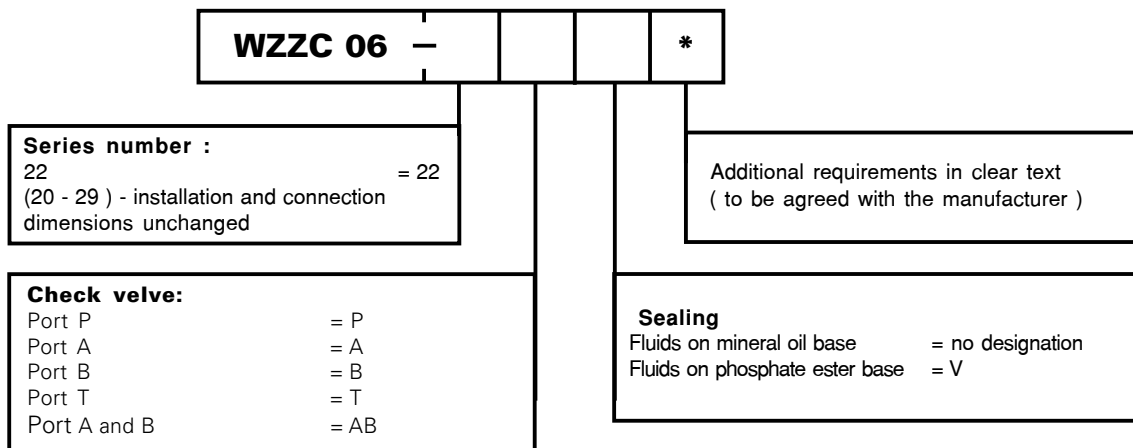


P A B T

WZZC 06-22 AB

## HOW TO ORDER

Orders coded in the way showed below should be forwarded to the manufacturer.



Coding example : WZZC 06 - 22P

PONAR WADOWICE S.A.  
ul. Wojska Polskiego 29  
34-100 Wadowice  
tel. 033/ 823 39 43, 823 30 41  
fax 033/ 873 48 80  
e-mail: ponar@ponar-wadowice.pl

