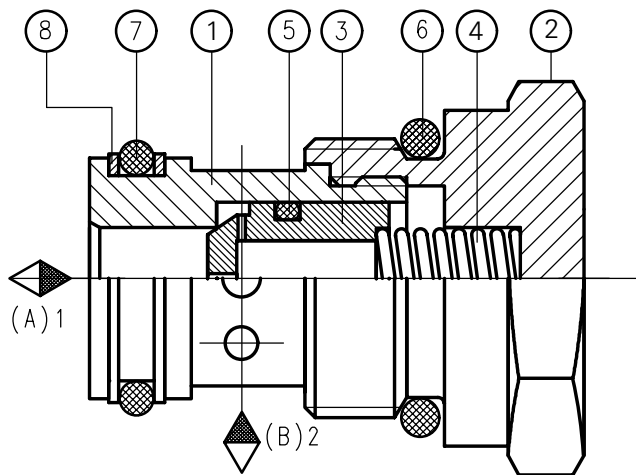
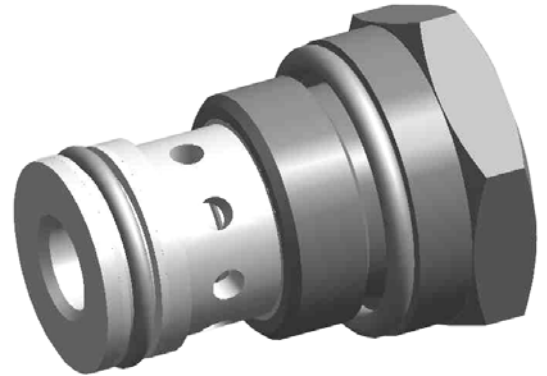


APPLICATION

The valves type UDSD 6 are pressure and viscosity dependent throttle/check valves. They are designed to control fluid flow rate in one direction and allow free flow in the opposite direction.



DESCRIPTION OF OPERATION

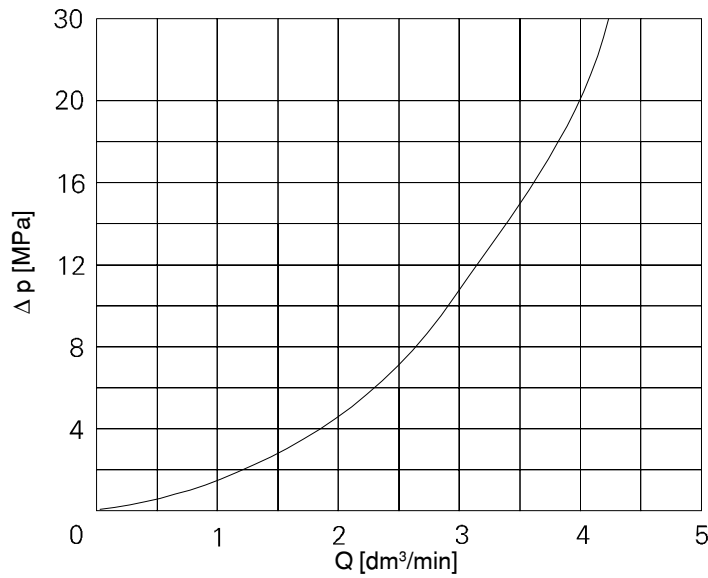
In throttling direction oil flows from connection A (B) to connection B (A) via a hole in poppet (3). Throttling depends on the hole diameter in the poppet (3). In the opposite direction oil flow acts on the surface face of the poppet (3).

The poppet (3) is lifted from its seat and fluid flows freely through the valve.

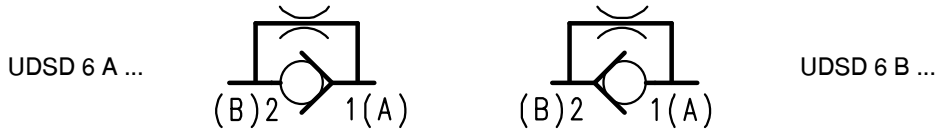
TECHNICAL DATE

Working fluid	Mineral oil
Nominal fluid viscosity	37 mm ² /s at temperature 328 K (55 °C)
Viscosity range	2,8 up to 380 mm ² /s
Optimum working temperature range	313 up to 328 K (40 up to 55 °C)
Fluid temperature range	243 up to 343 K (-30 up to 70 °C)
Required fluid filtration	16 μm
Recommended fluid filtration	10 μm
Max working pressure	29 MPa
Cracking pressure	from 0,1 to 0,5 MPa
Weight	0,1 kg

$\Delta p = Q$ curve -via closed check valve with open throttle



SYMBOL



HOW TO ORDER

Orders coded in the way showed below should be forwarded to the manufacturer

UDSD 6		/	- 1	M1	*
--------	--	---	-----	----	---

<p>Direction of flow Flow from 1 to 2 = A Flow from 2 to 1 = B</p>	
<p>Series number 02 = 02 (00 - 09) = installation and connection dimension unchanged</p>	
<p>Cracking pressure 0,1 MPa (only for valve A) = 10 0,15 MPa (only for valve A) = 15 0,3 MPa = 30 0,5 MPa = 50</p>	
<p>Diameter of throttle hole 1 mm = 1</p>	
<p>Kind of cavity Cavity M22x1,5 = M1</p>	
<p>Sealing for fluids on mineral oil base = no designation for fluid on phosphate ester base = V</p>	
<p>Further requirements to be added in text (to agree with the manufacturer)</p>	

CODING EXAMPLE :
UDSD 6 A 02/50-1 M1 V

PONAR WADOWICE S.A.
ul. Wojska Polskiego 29
34-100 Wadowice
tel. 033/ 823 39 43, 823 30 41
fax 033/ 873 48 80
e-mail: ponar@ponar-wadowice.pl

