

DESCRIPTION OF OPERATION

4-way ball valve type BK... is applied to open and close working fluid flow in hydraulic systems. Switching position is set by means of a lever coupled with the spindle 3 turning the ball 1. Polyamide seats 2 provide the seal of the ball. In case of need, the lever can be assembled 180° turned, towards the spindle.

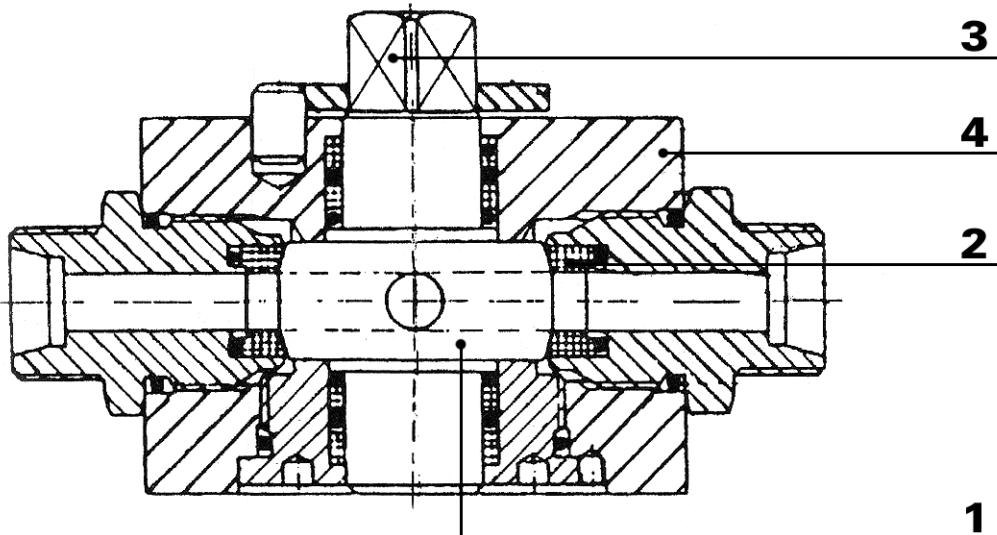


Caution:

Leak tightness in the seat cut-off can be obtained when pressure in it is zero or pressure on the way of the connected seats exceeds.

The valve install in hydraulic system to take hold on hexagon of thread.

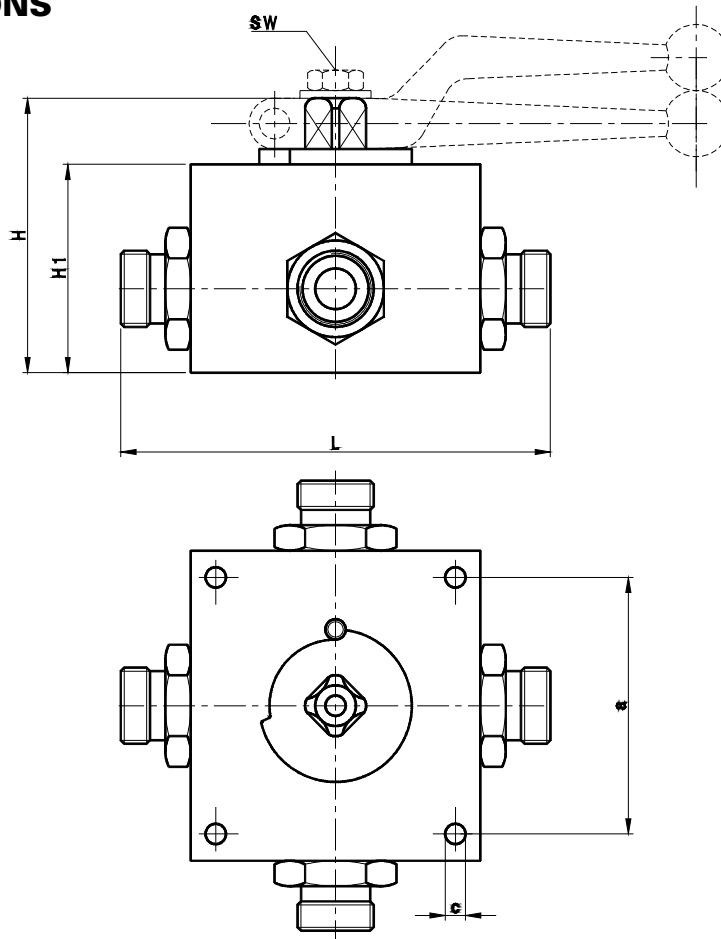
It isn't to allow for turn up the valve by hold on the housing.



TECHNICAL DATA

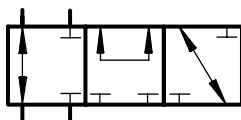
Nominal size	4, 6, 8, 10, 13, 16, 20, 25, 32, 40
Nominal pressure	60 MPa
Working medium	Mineral oil
Fluid viscosity range	2,8 do 380 mm ² / s
Operating temperature range	253 ÷ 373 K
Filtration (recommended)	< 30 μm
Materials:	
- body (4)	steel (blacked)
- ball (1)	steel (chromium plated)
- spindle (3)	steel (znic wated)
- seat (2)	polyamid
- seal of spindle	perbunan

OVERALL DIMENSIONS



4-way ball valve with female screw thread, **light** type - 4BKHL... L

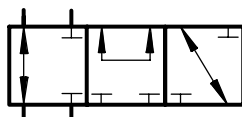
GRAPHICAL SYMBOL



Designation	Nominal passage DN	Real passage DR	P _{nom.} MPa	Exterior pipe diameter	Thread	L	a	c	H	H1	SW
4 BKHL 04 L	4	5	60	6	M12 x 1,5	105	55	6,5	68	52	12
4 BKHL 06 L	6	6	60	8	M14 x 1,5	105	55	6,5	68	52	12
4 BKHL 08 L	8	9	50	10	M16 x 1,5	114	65	6,5	71	55	14
4 BKHL 10 L	10	9	50	12	M18 x 1,5	114	65	6,5	71	55	14
4 BKHL 13 L	13	12,5	40	15	M22 x 1,5	136	80	8,5	77	60	14
4 BKHL 16 L	16	12,5	40	18	M26 x 1,5	136	80	8,5	77	60	14
4 BKHL 20 L	20	19	40	22	M30 x 2	152	85	8,5	89,5	70,5	17
4 BKHL 25 L	25	24	35	28	M36 x 2	170	105	11	98	78	19
4 BKHL 32 L	32	24	35	35	M45 x 2	174	115	11	112	86	19
4 BKHL 40 L	40	36	6,4	42	M52 x 2	246	150	14,5	129	107	22

4-way ball valve with male screw thread, heavy type - 4BKHS... L

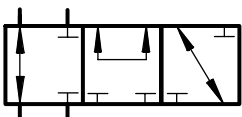
GRAPHICAL SYMBOL



Designation	Nominal passage DN	Real passage DR	P nom. MPa	Exterior pipe diameter	Thread	L	a	c	H	H1	SW
4 BKHS 04 L	4	5	60	8	M16 x 1,5	105	55	6,5	68	52	12
4 BKHS 06 L	6	6	60	10	M18 x 1,5	105	55	6,5	68	52	12
4 BKHS 08 L	8	9	50	12	M20 x 1,5	116	65	6,5	71	55	14
4 BKHS 10 L	10	9	50	14	M22 x 1,5	121	65	6,5	71	55	14
4 BKHS 13 L	13	12,5	40	16	M24 x 1,5	140	80	8,5	77	60	14
4 BKHS 16 L	16	12,5	40	20	M30 x 2	144	80	8,5	77	60	14
4 BKHS 20 L	20	19	40	25	M36 x 2	162	85	8,5	89,5	70,5	17
4 BKHS 25 L	25	24	35	30	M42 x 2	180	105	11	98	78	19
4 BKHS 32 L	32	24	35	38	M52 x 2	184	115	11	112	86	19

4-way ball valve with female screw thread, type - 4BKR... L

GRAPHICAL SYMBOL

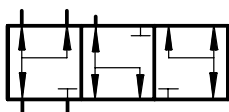


Designation	Nominal passage DN	Real passage DR	P nom. MPa	Exterior pipe diameter	Thread	L	a	c	H	H1	SW
4 BKR 04 L...	4	5	60	6	G 1/8"	100	55	6,5	68	52	12
4 BKR 06 L...	6	6	60	8	G 1/4"	100	55	6,5	68	52	12
4 BKR 10 L...	10	9	50	12	G 3/8"	115	65	6,5	71	55	14
4 BKR 13 L...	13	12,5	40	15	G 1/2"	135	80	8,5	77	60	14
4 BKR 20 L...	20	19	40	22	G 3/4"	148	85	8,5	89,5	70,5	17
4 BKR 25 L...	25	24	35	28	G 1"	172	105	11	98	78	19
4 BKR 32 L...	32	24	35	35	G1 1/4"	188	115	11	112	86	19
4 BKR 40 L...	40	36	6,3	42	G1 1/2"	230	150	14,5	129	107	22

4-way ball valve with male screw thread, light type - 4BKHL... T1 and 4BKHL...T2

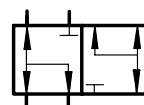
GRAPHICAL SYMBOL

4 BKHL . . T1



or

4 BKHL . . T2

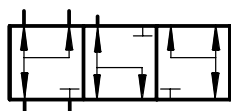


Designation	Nominal passage DN	Real passage DR	P nom. MPa	Exterior pipe diameter	Thread	L	a	c	H	H1	SW
4 BKHL 04 T...	4	5	60	6	M12 x 1,5	105	55	6,5	68	52	12
4 BKHL 06 T...	6	6	60	8	M14 x 1,5	105	55	6,5	68	52	12
4 BKHL 08 T...	8	9	50	10	M16 x 1,5	114	65	6,5	71	55	14
4 BKHL 10 T...	10	9	50	12	M18 x 1,5	114	65	6,5	71	55	14
4 BKHL 13 T...	13	12,5	40	15	M22 x 1,5	136	80	8,5	77	60	14
4 BKHL 16 T...	16	12,5	40	18	M26 x 1,5	136	80	8,5	77	60	14
4 BKHL 20 T...	20	19	40	22	M30 x 2	152	85	8,5	89,5	70,5	17
4 BKHL 25 T...	25	24	35	28	M36 x 2	170	105	11	98	78	19
4 BKHL 32 T...	32	24	35	35	M45 x 2	174	115	11	112	86	19
4 BKHL 40 T...	40	36	6,3	42	M52 x 2	246	150	14,5	129	107	22

4-way ball valve with male screw thread, type heavy - 4BKHS... T1 and 4BKHS...T2

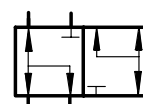
GRAPHICAL SYMBOL

4 BKHS . . T1



or

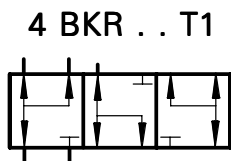
4 BKHS . . T2



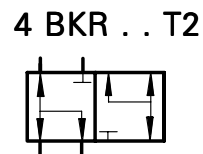
Designation	Nominal passage DN	Real passage DR	P nom. MPa	Exterior pipe diameter	Thread	L	a	c	H	H1	SW
4 BKHS 04 T...	4	5	60	8	M16 x 1,5	105	55	6,5	68	52	12
4 BKHS 06 T...	6	6	60	10	M18 x 1,5	105	55	6,5	68	52	12
4 BKHS 08 T...	8	9	50	12	M20 x 1,5	116	65	6,5	71	55	14
4 BKHS 10 T...	10	9	50	14	M22 x 1,5	121	65	6,5	71	55	14
4 BKHS 13 T...	13	12,5	40	16	M24 x 1,5	140	80	8,5	77	60	14
4 BKHS 16 T...	16	12,5	40	20	M30 x 2	144	80	8,5	77	60	14
4 BKHS 20 T...	20	19	40	25	M36 x 2	162	85	8,5	89,5	70,5	17
4 BKHS 25 T...	25	24	35	30	M42 x 2	180	105	11	98	78	19
4 BKHS 32 T...	32	24	35	38	M52 x 2	184	115	11	112	86	19

4-way ball valve with female screw thread, type - 4BKR... T1 and 4BKR... T2

GRAPHICAL SYMBOL



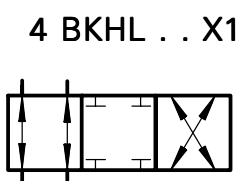
or



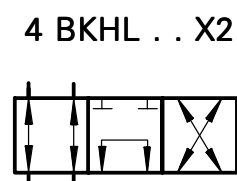
Designation	Nominal passage DN	Real passage DR	P nom. MPa	Exterior pipe diameter	Thread	L	a	c	H	H1	SW
4 BKR 04 T...	4	5	60	6	G 1/8"	100	55	6,5	68	52	12
4 BKR 06 T...	6	6	60	8	G 1/4"	100	55	6,5	68	52	12
4 BKR 10 T...	10	9	50	12	G 3/8"	115	65	6,5	71	55	14
4 BKR 13 T...	13	12,5	40	15	G 1/2"	135	80	8,5	77	60	14
4 BKR 20 T...	20	19	40	22	G 3/4"	148	85	8,5	89,5	70,5	17
4 BKR 25 T...	25	24	35	28	G 1"	172	105	11	98	78	19
4 BKR 32 T...	32	24	35	35	G1 1/4"	188	115	11	112	86	19
4 BKR 40 T...	40	36	6,3	42	G1 1/2"	230	150	14,5	129	107	22

4-way ball valve with female screw thread, type - 4BHL... X

GRAPHICAL SYMBOL



or

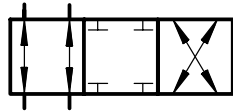


Designation	Nominal passage DN	Real passage DR	P nom. MPa	Exterior pipe diameter	Thread	L	a	c	H	H1	SW
4 BKHL 04 X...	4	5	60	6	M12 x 1,5	105	55	6,5	68	52	12
4 BKHL 06 X...	6	6	60	8	M14 x 1,5	105	55	6,5	68	52	12
4 BKHL 08 X...	8	9	50	10	M16 x 1,5	114	65	6,5	71	55	14
4 BKHL 10 X...	10	9	50	12	M18 x 1,5	114	65	6,5	71	55	14
4 BKHL 13 X...	13	12,5	40	15	M22 x 1,5	136	80	8,5	77	60	14
4 BKHL 16 X...	16	12,5	40	18	M26 x 1,5	136	80	8,5	77	60	14
4 BKHL 20 X...	20	19	40	22	M30 x 2	152	85	8,5	89,5	70,5	17
4 BKHL 25 X...	25	24	35	28	M36 x 2	170	105	11	98	78	19
4 BKHL 32 X...	32	24	35	35	M42 x 2	174	115	11	112	86	19
4 BKHL 40 X...	40	36	6,4	42	M52 x 2	246	150	14,5	129	107	22

4-way ball valve with male screw thread, heavy type - 4BKHS... X1 and 4BKHS... X2

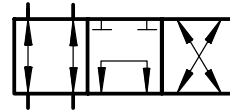
GRAPHICAL SYMBOL

4 BKHS . . X1



or

4 BKHS . . X2

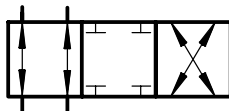


Designation	Nominal passage DN	Real passage DR	P nom. MPa	Exterior pipe diameter	Thread	L	a	c	H	H1	SW
4 BKHS 04 X...	4	5	60	8	M16 x 1,5	105	55	6,5	68	52	12
4 BKHS 06 X...	6	6	60	10	M18 x 1,5	105	55	6,5	68	52	12
4 BKHS 08 X...	8	9	50	12	M20 x 1,5	116	65	6,5	71	55	14
4 BKHS 10 X...	10	9	50	14	M22 x 1,5	121	65	6,5	71	55	14
4 BKHS 13 X...	13	12,5	40	16	M24 x 1,5	140	80	8,5	77	60	14
4 BKHS 16 X...	16	12,5	40	20	M30 x 2	144	80	8,5	77	60	14
4 BKHS 20 X...	20	19	40	25	M36 x 2	162	85	8,5	89,5	70,5	17
4 BKHS 25 X...	25	24	35	30	M42 x 2	180	105	11	98	78	19
4 BKHS 32 X...	32	24	35	38	M52 x 2	184	115	11	112	86	19

4-way ball valve with female screw thread, type - 4BKR... X1 and 4BKR... X2

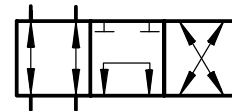
GRAPHICAL SYMBOL

4 BKR . . X1



or

4 BKR . . X2



Designation	Nominal passage DN	Real passage DR	P nom. MPa	Exterior pipe diameter	Thread	L	a	c	H	H1	SW
4 BKR 04 X...	4	5	60	6	G 1/8"	100	55	6,5	68	52	12
4 BKR 06 X...	6	6	60	8	G 1/4"	100	55	6,5	68	52	12
4 BKR 10 X...	10	9	50	12	G 3/8"	115	65	6,5	71	55	14
4 BKR 13 X...	13	12,5	40	15	G 1/2"	135	80	8,5	77	60	14
4 BKR 20 X...	20	19	40	22	G 3/4"	148	85	8,5	89,5	70,5	17
4 BKR 25 X...	25	24	35	28	G 1"	172	105	11	98	78	19
4 BKR 32 X...	32	24	35	35	G1 1/4"	188	115	11	112	86	19
4 BKR 40 X...	40	36	6,3	42	G1 1/2"	230	150	14,5	129	107	22

PONAR WADOWICE S.A.
 ul. Wojska Polskiego 29
 34-100 Wadowice
 tel. 033/ 823 39 43, 823 30 41
 fax 033/ 873 48 80
 e-mail: ponar@ponar-wadowice.pl

