

### APPLICATION

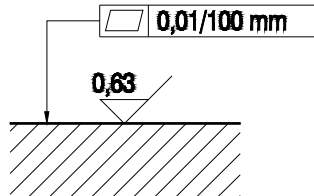
Rectifier sandwich plate type UZFC 10 is used to set flow direction on outlet from A to B independent of supply direction on inlet A1, B1. The valves are mounted under flow control valve type 2FRM 10 and have the same porting pattern.

1. - Sealing ring 18,7 x 3,5 - 4 pcs

Valve fixing screw - M8 x 110 - 10.9 to PN-74/M-82302 (DIN 912) - 4 pcs

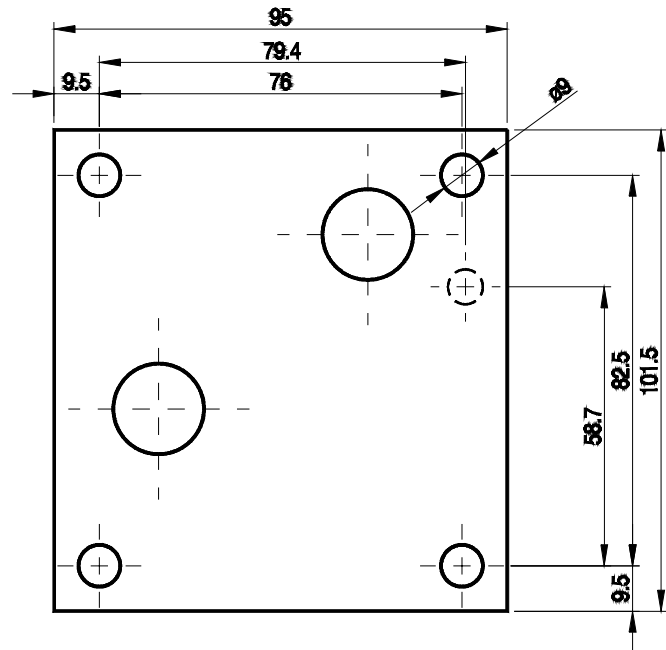
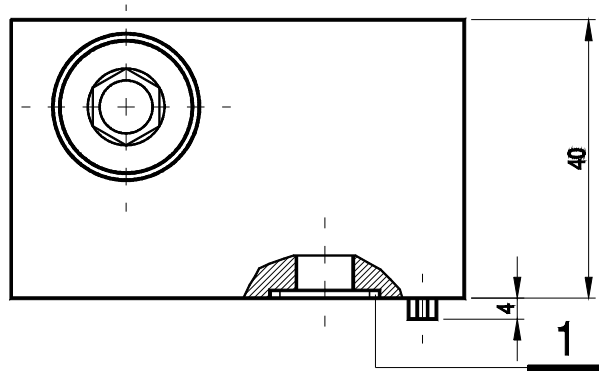
Tightening torque - 37 Nm.

The screws and subplate should be ordered separately.



Required surface finish of mating subplate face.

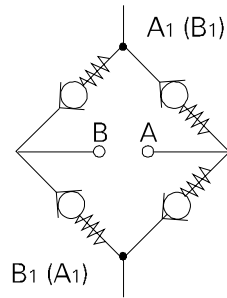
### OVERALL AND CONNECTION DIMENSIONS



### TECHNICAL DATA

Working medium	Mineral oil
Nominal fluid viscosity	37 mm <sup>2</sup> /s at temp. 328 K
Viscosity range	2,8 do 380 mm <sup>2</sup> /s
Optimum working temperature	313 - 328 K
Fluid temperature range	243 - 343 K
Filtration required	16 μm
Filtration required	10 μm
Cracking pressure	0,15 MPa
Weight	about 3,9 kg

## DIAGRAM



## HOW TO ORDER

Orders coded as below should be forwarded to the manufacturer.

<b>UZFC</b>	<b>-10/22</b>		*
-------------	---------------	--	---

<b>Rectifier sandwich plate</b>
---------------------------------

<b>Nominal size</b>
---------------------

Size 10	= 10
---------	------

<b>Series number</b>
----------------------

22	= 22
(20-29)	= installation and connection dim. unchanged

<b>Sealing</b>
----------------

Rubber	= no code
Viton	= V

<b>Further requirements in clear text ( to agree with the manufacturer )</b>
--

Example: **UZFC - 10/22**

PONAR WADOWICE S.A.  
 ul. Wojska Polskiego 29  
 34-100 Wadowice  
 tel. 033/ 823 39 43, 823 30 41  
 fax 033/ 873 48 80  
 e-mail: ponar@ponar-wadowice.pl

 **PONAR**<sup>®</sup>  
**wadowice**